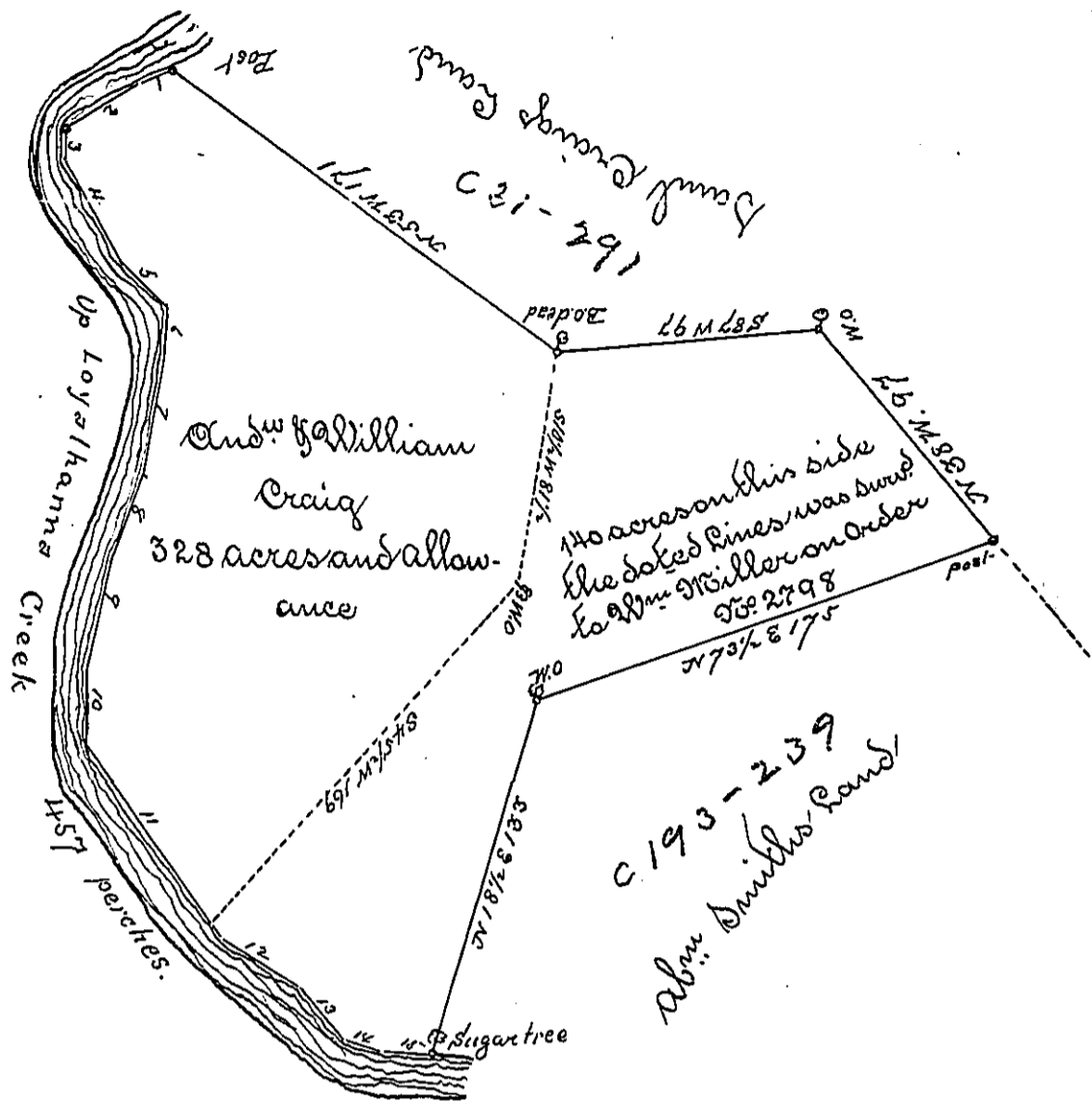


No of Courses	Courses	Distances
1	S 69 W	12
2	S 61 W	3.2
3	S 1 W	10
4	S 26 E	44
5	S 45 E	22
6	S 8 W	20
7	S 14 W	42
8	S 23 W	29
9	S 15 W	42
10	S 5 W	26
11	S 34 E	84
12	S 55 E	33
13	S 42 E	26
14	S 68 E	14
15	N 85 E	21
Total dist		457



Sir. After I rec<sup>d</sup> your letter of Dec<sup>r</sup>: 27<sup>th</sup> 1803 There was surveyd for Andrew and William Craig in pursuance of their Warrant dated Nov<sup>r</sup>: 15<sup>th</sup> 1786 the above described Tract of Land containing three hundred and twenty eight acres with an allowance proportioned to Six Percent situate in Perry Township Westmoreland County Surveyd March 17<sup>th</sup> 1802

Samuel Cochran Esquire }  
 Sur<sup>r</sup>: Gen<sup>l</sup> of Penna }

J<sup>o</sup>hn Moore A. S.

To B. the other part of W<sup>m</sup>: Miller's Survey was by order of the Board of Prop<sup>ty</sup> Surveyd to Ab<sup>m</sup>: Smith on Order To<sup>o</sup>: 1.

IN TESTIMONY that the above is a copy of the original remaining on file in the Department of Internal Affairs of Pennsylvania, made conformably to an Act of Assembly approved the 16th day of February, 1833, I have hereunto set my Hand and caused the Seal of said Department to be affixed at Harrisburg, this

Third day of March 1896.

James Whatta  
 Secretary of Internal Affairs.